

Wayne
Dalton[®]
GARAGE DOORS

M O D E L

9405

CARRIAGE HOUSE STEEL



Model 9405 Providence panel, Custom finish, Stockbridge windows, Decorative hardware

style. efficiency. safety.

The Wayne Dalton Model 9405 is rugged, low maintenance, and thermally efficient. This model includes important safety features like our exclusive pinch-resistant design.

These beautiful carriage house doors can be custom painted to add extra style and charm to the exterior of any home.



Model 9405 Lexington panel, White finish, Clear II windows, Decorative hardware

PERFORMANCE FEATURES



Pinch-Resistant Door Panels

Pinch-resistant door panels are designed to push fingers safely out of harm's way when the door is closing.



TorqueMaster® Plus Counterbalance

The Wayne Dalton TorqueMaster® Plus is the first counterbalance system to seal springs safely within a steel tube. It contains an anti-drop feature that reduces the risk of door free fall.



Thermal Efficiency

The foamed-in-place polyurethane insulation with an R-value of 10* improves the thermal efficiency of a home and blocks unwanted street noise from entering living areas that adjoin the garage. The steel backer adds beauty and strength to the interior of the garage door.

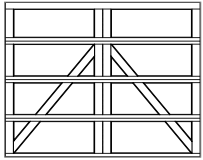


Warranty

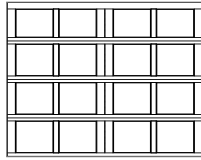
Model 9405 offers a Limited Lifetime Warranty against cracking or splitting due to rust-through and against degradation of the foam insulation. See full warranty for complete details.

*Wayne Dalton uses a calculated door section R-value for our insulated doors.

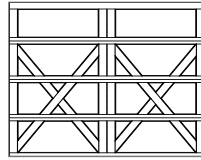
1 Choose Your Style



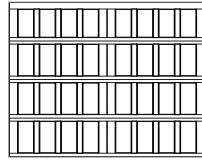
Charleston



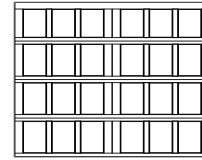
Newport



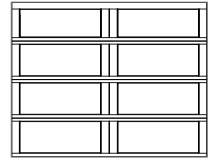
Lexington



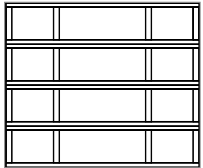
Oak Park



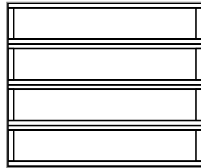
Providence



Westfield



Hampton



Camden

Available in 8', 9', 10', 15', 16' and 18' wide by 7' and 8' high. Doors measuring 10' wide or more come with a double car door design, which are equivalent to 2 single-car doors side by side. See dealer for details on double car door designs for Hampton and Camden.

2 Choose Your Color

Painted Finishes



White



Almond



Clay



Gray



Green



Brown

Two-Toned Painted Finishes

All door sections will be painted in the color chosen. All trim pieces will be white.



Green/
White



Gray/
White



Clay/
White



Wayne Dalton's custom painting process offers more than 6,000 colors. See dealer for details.

3 Choose Your Windows



Arched Stockton



Stockbridge



Arched Stockton Single



Clear II



Stockton III



Cascade III



Waterton III



Arched Stockton Double

4 Choose Your Hardware



Aspen



Barcelona



Fleur-de-Lis



Spear

AFTER

BEFORE



Model 9405 Charleston panel, Custom finish, Arched Stockton windows, Decorative hardware



Garage Door Design Center

To see this door on your home, visit wayne-dalton.com and try our Garage Door Design Center. Upload a photo of your home and experiment with panel designs, color options, window styles and decorative hardware designs. Instant curb appeal awaits you with just a click of your mouse.

Wayne Dalton
GARAGE DOORS

DISTRIBUTED BY:

2501 S. State Hwy 121 Bus., Ste 200
Lewisville, TX 75067

wayne-dalton.com



© 2017 Wayne Dalton, a Division of Overhead Door Corporation. Consistent with our policy of continuing product improvement, we reserve the right to change product specifications without notice or obligation. Item 325814 07/17